



Santa Barbara Trust for Historic Preservation

*El Presidio de Santa Bárbara SHP • Casa de la Guerra
Santa Inés Mission Mills • Jimmy's Oriental Gardens*

To preserve, restore, reconstruct and interpret historic sites in Santa Barbara County

PRESS RELEASE

FOR IMMEDIATE RELEASE

October 5, 2011

PRESS CONTACT

Christa Clark Jones

Santa Barbara Trust for Historic Preservation

123 East Canon Perdido Street, Santa Barbara, CA

Tel: (805) 966-1279 ■ Fax: (805) 966-9888

E-mail: christa@sbthp.org ■ Website: www.sbthp.org

***Archaeology Month* — Lecture Series Features Retrospective of Fifty Years of Archaeology at SBTHP and Geophysical Survey Techniques**



(Santa Barbara, CA)—The Santa Barbara Trust for Historic Preservation (SBTHP) is proud to present the Archaeology Month Lecture Series. **Board President Dr. Robert Hoover and Mike Imwalle, staff archaeologist, will present “Fifty Years of Archaeology at SBTHP: A Retrospective” on Thursday, October 13 at 7:00 p.m. On Saturday, October 15 at 2:00 p.m., Dr. Lewis E. Somers will present “Geophysical Survey Techniques: Santa Inés Mission.”** The lectures will be held in the

Presidio Chapel at El Presidio de Santa Bárbara State Historic Park.

A review of 50 years of archaeology at the Santa Barbara Presidio beginning with Dr. James Deetz in 1961, the retrospective follows the history of archaeological study from before the incorporation of SBTHP through the ongoing development of the El Presidio de Santa Bárbara SHP. **Examine the evolution of techniques used to uncover Santa Barbara’s oldest historic site.** See what has been achieved and get a glimpse of the research that is planned for the future.

Learn about geophysical survey techniques with Dr. Lewis E. Somers, founder of GeoScan, Inc.

An innovative tool used for archaeological mapping, geophysical surveying reveals normally invisible features and objects buried beneath the ground surface, including architecture and traces of human activity, without disturbing the archaeological record.

Examine appropriate instrumentation, survey methods, design, and data processing. As a case study, learn about Dr. Somer's research at Santa Inés

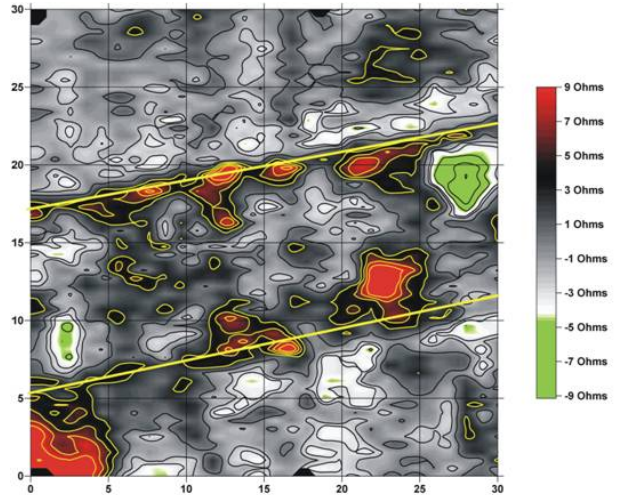


Figure 4: Magnetic Contour Map Overlaid on Gray Scale Resistance Map

Mission: a survey of the Santa Inés Indian dormitory that reveals foundation walls, interior walls, iron artifacts, interior activity areas, aqueducts, and much more. Opportunities for hands-on use of the equipment will be provided after the lecture on the Presidio site.

####

CALENDAR LISTING

LECTURE: Fifty Years of Archaeology at SBTHP: A Retrospective

DATE: Thursday, October 13, 2011

TIME: 7:00 p.m.

LOCATION: Presidio Chapel at El Presidio de Santa Bárbara State Historic Park

123 East Canon Perdido Street, Santa Barbara

COST: \$10 for non-members, \$5 for students, FREE for SBTHP members

FOR MORE INFORMATION: Visit www.sbthp.org or call (805) 965-0093

LECTURE: Geophysical Survey Techniques: Santa Inés Mission

DATE: Saturday, October 15, 2011

TIME: 2:00 p.m.

LOCATION: Presidio Chapel at El Presidio de Santa Bárbara State Historic Park

COST: \$10 for non-members, \$5 for students, FREE for SBTHP members

FOR MORE INFORMATION: Visit www.sbthp.org or call (805) 965-0093

ABOUT the Santa Barbara Trust for Historic Preservation (SBTHP) – Founded in 1963 by Dr. Pearl Chase and other community leaders, the Santa Barbara Trust for Historic Preservation (SBTHP) works *to preserve, restore, reconstruct and interpret historic sites in Santa Barbara County*. SBTHP operates El Presidio de Santa Bárbara State Historic Park, Santa Barbara’s 18th century birthplace, under a unique agreement with California State Parks. Recently purchased, the neighboring building that housed Jimmy’s Oriental Gardens provides an opportunity to interpret the history of Santa Barbara’s Asian American community in the Presidio neighborhood. SBTHP also owns and operates Casa de la Guerra, the 1820s home of Presidio Comandante José de la Guerra and his family. The restored home is now a museum featuring original furnishings and rotating exhibits. Recently SBTHP signed an agreement with State Parks to manage and develop the Santa Inés Mission Mills near the town of Solvang as a future California State Park. These are a few of the projects SBTHP is presently pursuing—learn more at **www.sbthp.org**.

####